

India .....  
Summer  
School .....  
20  
24

.....  
.....  
.....  
.....

- LxS Partners and Collaborators -



école nationale  
supérieure  
d'architecture  
de paris-belleville



DISLOCAL



bakeri  
since 1959



कासाइंदिया  
casa de la  
India



distrito  
retiro  
MADRID



le sample



CEPT  
UNIVERSITY  
FACULTY  
OF ARCHITECTURE



aia  
MUMBAI



// 00 //

# Index

// 01 //

ABOUT LXS FOUNDATION

// 02 //

SUMMER SCHOOL 2024 BRIEF

- Site + Context -
- Brief + Pedagogy -
- Points of Action -

// 03 //

VISITS + LECTURERS

// 04 //

LOCATIONS + ITINERARY

// 05 //

DATES + SCHEDULES

// 06 //

CITIES + CASE STUDIES

// 07 //

REGISTRATION PROCESS

// 08 //

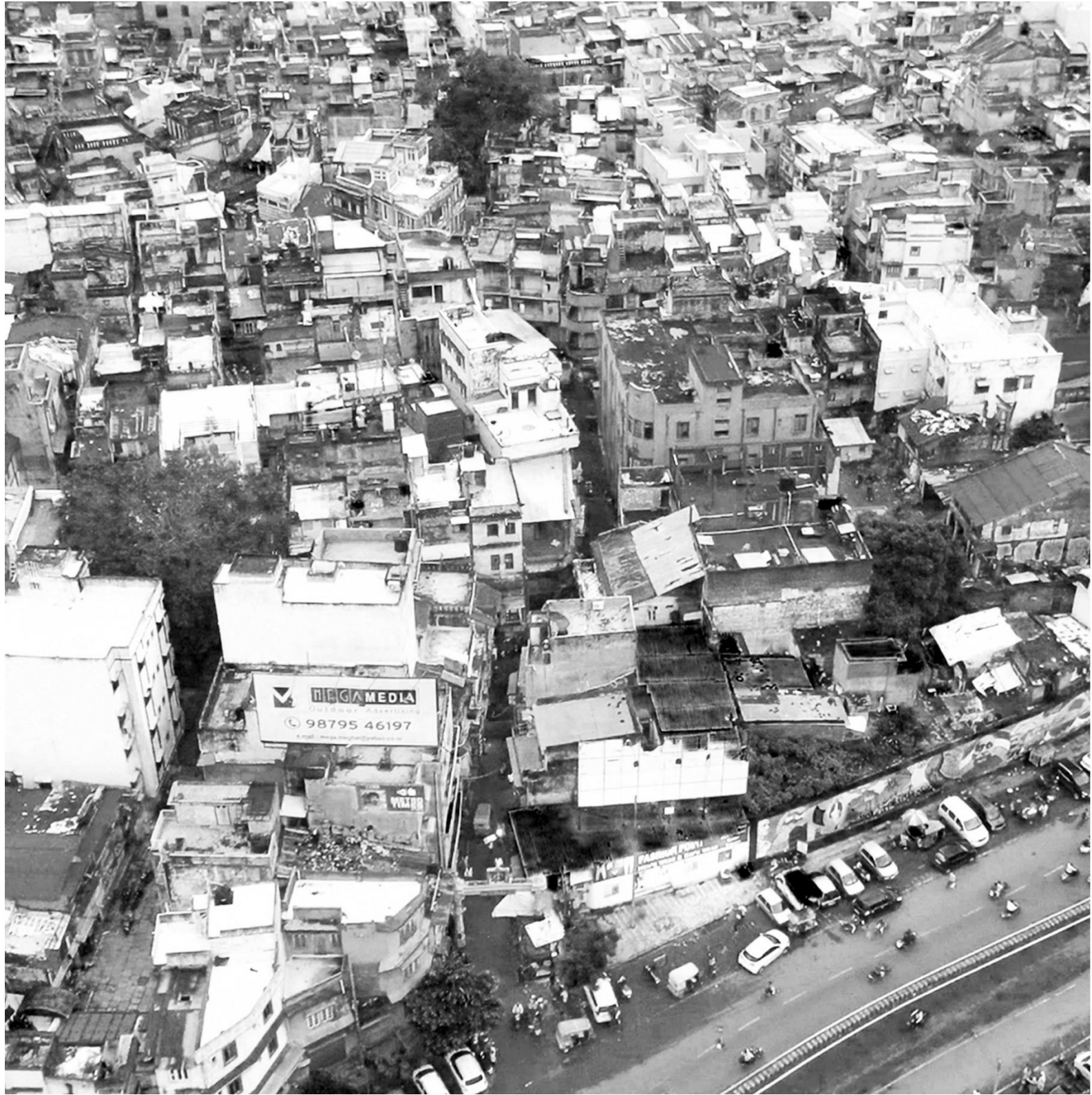
- COURSE EXPENSES -
- Travel Guidelines -

// 09 //

GENERAL INFORMATION

// 10 //

CONTACT



## // 01 //

### About LxS

LxS Foundation is an Indo-European organization that aspires to build fresh perspectives by applying an alternative approach in the fields of collaborative design, architecture, urbanism, heritage revitalization challenges. We intent to create organic ecosystem by interlinking resources and expert professionals across international communities that commit to developing a decisive practical method to resolve a specific targeted issue.

*LxS = LOCAL X SOCIETY*

*LxS amalgamates local aspects and social elements in every step of the process.*

*LOCAL represents MICRO,  
subspace, locality, specific communities, rural areas, minorities,  
vernacular settlements, traditional techniques, heritage culture.*

*SOCIETY signifies MACRO,  
universe, global cities, connectivity and knowledge disclosure,  
new technologies & future sustainable solutions.*

#### // LXS SUMMER COURSE CODES AND WHAT SETS US APART //

< MORE PRACTICAL, LESS THEORY > Our curriculum places a strong emphasis on practical learning. Rather than spending extended hours in traditional classroom settings, students will frequently engage in site visits to architectural case studies, participate in form and systems analysis across various projects, and enjoy hands-on experiences with local workers.

< BESPOKE TEACHING FRAMEWORK > Tailored to meet the specific needs of design professionals, our courses bridge skill gaps and promote critical design thinking.

< IMMERSE IN LOCAL CULTURE > Beyond the classroom, our program offers a cultural immersion experience, allowing you to connect with the rich architectural history and heritage of India.

< LEARN FROM LOCAL PRACTITIONERS > Gain insights from experienced Indian professionals who bring real-world expertise and a unique perspective to your learning journey.

## // 02.1 //

# Site and Context

Ahmedabad is one of the largest and more prominent cities in India. It holds the 'Architecture Hub' title, thanks to its institutions and various architecture master pieces, from ancient to modern examples. Ahmedabad is the city where Gandhi founded his Ashram and fled for independence. The city where Khan, Le Corbusier, Doshi, Charles Correa, and many other renowned Indian architects have materialized the best of their work.

The walled city of Ahmedabad was declared Historic Heritage City in 2018, a fact which has promoted the debate of the existing possibilities regarding the historic cities and its adaptation to the contemporary metropolis.

Despite the Walled City being a high valued Heritage precinct under UNESCO Status, the existing condition of the streets, buildings, and facades is unacceptably deteriorated, and currently it is facing problems of exodus of population.

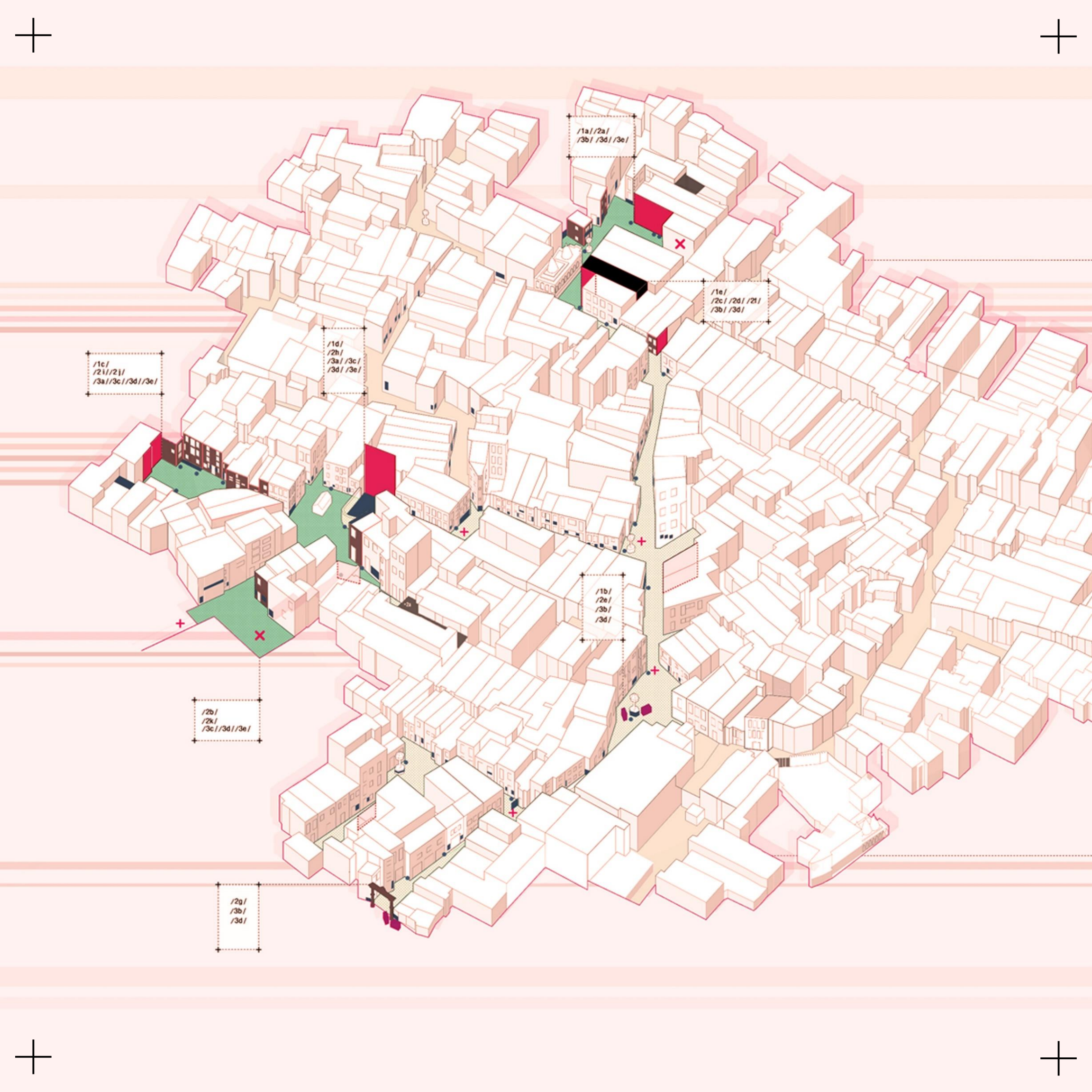
Our area of action in this course focuses on the Pols, the neighbourhoods in the historical city. A pol is a residential neighbourhood with well-defined limits, where people from different communities gather around a plaza or Chowk. The morpho structure of the area is characterized by a highly densified urban fabric, whose formation dates back to the late 18th century.

LxS has contributed to the development of this area for the last 4 years, implementing changes that has converted the space for better. We have completed two new plazas in neglected plots, new pavements, restored more than 35 houses' facades, installed more than 2500 native plants, wall paintings, and celebrated festivals in 2018 and 2019 to contribute to the cultural aspect and livelihood of locals.

The impact and response of these interventions has opened an umbrella of possibilities unknown before. As we have been able to experience, there are many demands from neighbours to restore and convert existing spaces into something else.

The course aims to analyse the current situation, including all the factors that affect positively or negatively the living conditions of the neighbours. The key is to accept new social movements and trends, not as something to avoid, but as something that needs to dialogue with the environment. An environment that, in spite of its cultural heritage, needs to be modified and adapted to the new contemporary living conditions.

The final goal is to implement our designs together with the neighbours of the Pol. This exercise will continue the endeavour of transforming the Pol through participatory and inclusive methods, and will become part of the INTACH guidelines for future actions that work in the same realms.



## // 02.3 //

# Course Brief / Pedagogy

### IN THIS COURSE //

- Participants will stay and coexist with the locals in the neighborhood itself, using the same facilities, eating traditional food, and enjoy a life that for sure has a different rhythm.
- We will visit all makers, handcrafters and manufacturers in the district, in order to understand the context.
- We are currently restoring a School in Old City, where students will be able to use as co-working area, to develop their ideas and spend time for discussions or forums, etc.
- The final objective is to build, to materialize our ideas, and transform the place for the better.
- The course will include visits to the Modern Architecture Master Pieces located in the city.

### APPROACH AND OBJECTIVES //

- To rethink the existing neglected spaces and provide an alternative solution that face the context challenges as:  
1/quality of the space, 2/technical aspects as clean energy and self-sufficiency, 3/ the landscape of the city, 4/ the economic cycle and the improvement of neighbor's livelihood.
- Needs and Resources Analysis >  
Mapping of the area, interviews to locals, catalogue of existing materials and manufacturers.
- General Action Plan and Conceptual Approach >  
Group work, discussions and forums with experts, design studio process and methodologies, schedules set, viability of the project.
- Design and Detailing >  
Interaction with makers and manufacturers, on-site hands-on coordination.
- Manufacturing and Implementation >  
Last phase of the course will consist in making and completing the designs in the location, to make the space functional and operational for the local families to enjoy it.



## // 02.2 //

### Points of Action

1. **RETHINKING THE TRADITIONAL PLAZA** > The Chowk is the traditional plaza of the Pol. It's the place where all the public activities occur, as the informal markets, the food stalls, the daily gatherings, and the celebration of festivals and rituals. Unfortunately, these open areas have been occupied by the vehicles due to the lack of available space, and the human activities compromised. The course will focus on existing issues as: organization of space, seating areas, addition of vegetation, vehicles restrictions, human friendly pavements, play areas, etc.
  2. **THE UPLEVEL CITY** > One of the biggest unutilized spaces existing in the old city, is that one that is located in the upper rooftop level. Traditionally, these spaces were used to dry the clothes or spices, to fly kites, or to sleep in the hot summer nights. It represents an identity element of the traditional domestic typology, and it has enormous potential to accommodate new activities and uses. The intervention will provide a space as a vertical spill out of the houses, where neighbours can use it for their own purpose or even to generate some extra income through the occasional rent in festivities.
  3. **URBAN FOREST** > One of the major conflicts in the Old City is the absence of gardens or green spaces. A very dense fabric and the over occupation of available space eradicated all signs of nature. However, a new opportunity can be explore considering the empty plots, neglected corners, and ruined infrastructure. Those pockets can become the oasis and pause point of the district. The exercise will focus on the study of vernacular plants and their adequacy to the spaces, and response to the site. Vegetation will not only provide shade, but also spices, fruits, vegetables that neighbors can use for their daily needs.
- **THE URBAN TOOLKIT** > Amidst the prevailing scenario of Asian cities and the burgeoning informal sector sprawling across the streets, this course seeks to offer an accessible and cost-effective solution that not only caters to the essential needs of the street vendors but also elevates the city's aesthetic allure. Participants will address the challenges posed by the informal sector, interact with the vendors and food tracks owners, and conduct a participatory design process to make the proposal of the stall. By the end of the course, a 1/1 prototype will be donated and located in a public plaza in the Old City.
  - **STREET ART AND CULTURAL EXPRESSION** > A good story, a narration, or a social statement; can be a very impactful tool when we want to transform a space. Given the strong context and the devotion of common citizens for the expression of art, street murals and visual interventions represent the perfect spark to democratize the urban space. There are innumerable empty walls that, adhere to an open space or chock, can become the meeting point, the landmark, or the backstage of the neighborhood activities.

// 02.2 //  
Points of Action / Previous Work by LxS

1



rethinking the traditional plaza

2



the uplevel city

3



urban forest

4



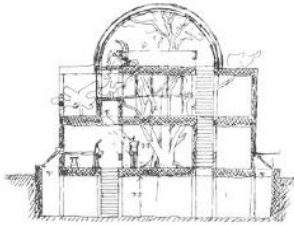
the urban toolkit

5



street art and cultural expression

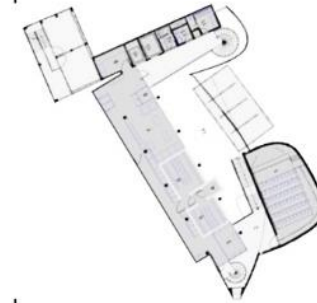
// 03//  
Visits + Lecturers



VastuShilpa Foundation  
Visit and Discussion



Final Exhibition  
ATMA House / Le Corbusier



Matharoo's Associates'  
Visit to Office, Discussion



**SHUBHRA RAJE**  
Architect, Professor,  
ShubhraRaje Built Environments



**SANKALP**  
Architect, Professor,  
CEPT University, India



**MELISSA SMITH**  
Banduksmith Studio,  
Ahmedabad, India



**ANAND SONECHA**  
Architect, Professor,  
SEALAB



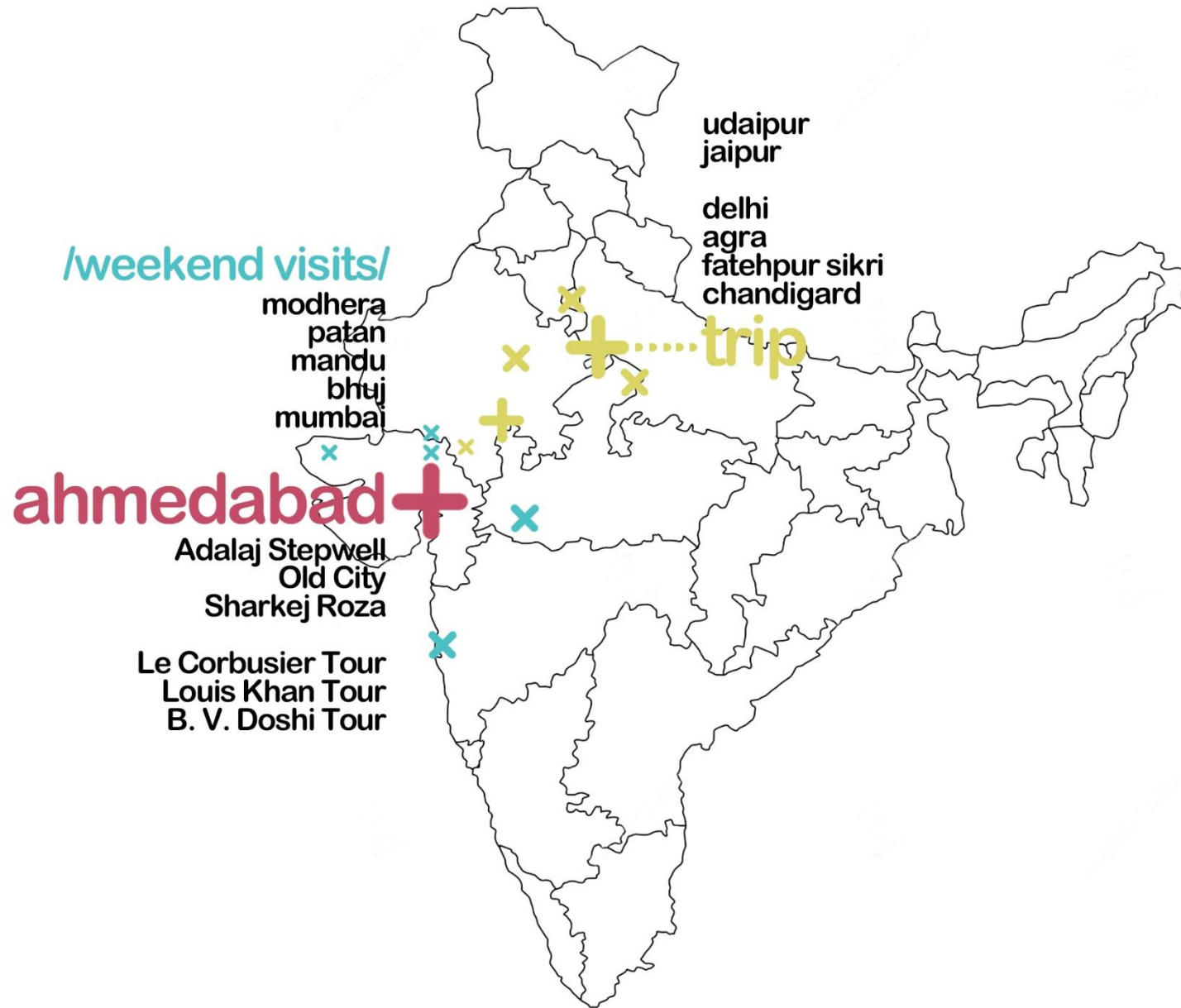
**SNEHAL NAGARSHETH**  
Architect, Professor,  
Anant University Dean



**PAVAN BAKERI**  
MIT Engineer  
Alliance Francaise Ahmedabad

// 04 //

# Locations / Itinerary



// 05 //

## Dates + Schedules

10th August	<b>Sat</b>	arrival to Delhi
11th August	<b>S</b>	trip
12th August	M	trip
13th August	Tu	trip
14th August	W	trip
15th August	Th	trip
16th August	Fri	trip
17th August	<b>Sat</b>	trip
18th August	<b>S</b>	trip
19th August	M	trip
20th August	Tu	Arrival to Ahmedabad
21st August	W	Design Process
22nd August	Th	Design Process
23rd August	Fri	Design Process
24th August	<b>Sat</b>	Ahmedabad Visits
25th August	<b>S</b>	Gujarat Visits
26th August	M	Design Process
27th August	Tu	Design Process
28th August	W	Hands On Site
29th August	Th	Hands On Site
30th August	Fri	Hands On Site
31st August	<b>Sat</b>	Hands On Site
1st September	<b>S</b>	Hands On Site
2nd September	M	Hands On Site
3rd September	Tu	Hands On Site
4th September	W	Hands On Site
5th September	Th	Hands On Site
6th September	Fri	Hands On Site
7th September	<b>Sat</b>	Closing Party
8th September	<b>S</b>	End of Course

## // 06.01 //

### Trip in India

#### RAJASTHAN

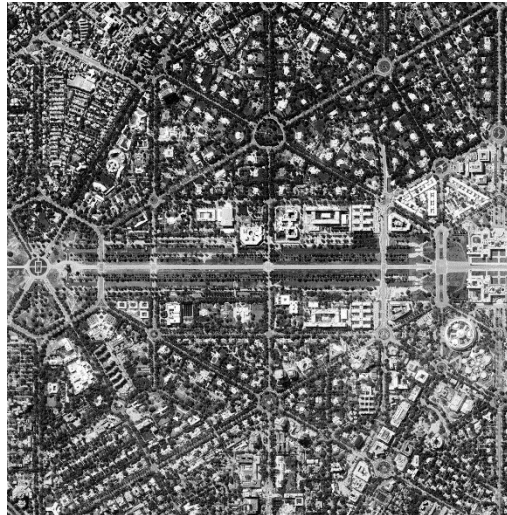


To explore a similar urban structure, we will travel to Udaipur and Jodhpur as a way to understand the relation between groundscapes and rooftops in the city as a public space continuum, which will be very useful once the practical exercises begin.

On the other hand, the city not only comprises many of the fundamental values of Rajasthani culture, but it also works as an appropriate setting to transition into Gujarat.

Participants will also be exposed to a very rich culture of crafts, within traditions of product and fabric design, and also in terms of constructive techniques within the realm of architecture and urbanism.

#### DELHI + CHANDIGARH



Our visit to Chandigarh will give us the opportunity to understand the first example of a modern and holistically planned city in India.

The Chandigarh government district, the Capitol, is a unique and exceptional example of Le Corbusier's contribution to the design of new types of public buildings.

Delhi, is in fact, an amalgam of eight cities, each built in a different era and site, and each ruler leaving a layer of architectural identity.

It has evolved into a culturally secular city – absorbing different religions, diverse cultures, both foreign and indigenous, and yet functioning as one organic entity.

#### AGRA + FATEPUR SIKRI



#### Agra

An early morning bus will allow us to enjoy the sunrise at the iconic Taj Mahal, considered the finest example of Mughal architecture.

Other interesting places to visit are Itimad-ud-Daulah, Agra Fort or Mehtab Bagh.

#### Fatepur Sikri

The town was founded in 1569 by the great Mughal emperor Akbar. Fatepur Sikri contains other early Mughal structures, exhibiting both Muslim and Hindu architectural influences.

Now maintained as a historic site, Fatepur Sikri was designated a UNESCO World Heritage site in 1986.

// 06.02 //  
Ahmedabad Case Studies



# // 07 //

## Registration Process

### < STEP 1 >

Fill out the Expression of Interest Form, or write us to [info.lxs.team@gmail.com](mailto:info.lxs.team@gmail.com)

### < STEP 2 >

Review and Choose. The course dossier contains all the information you need about the courses themes, dates, travel guidelines, and refund policies. This will help you to Select the Program that interests you the most.

### < STEP 3 >

Attend the Orientation Session organized by LxS and your Institution. This session is a chance for you to interact directly with the course organizers (Team LxS) and get answers to any academic or travel-related questions you may have.

### < STEP 4 >

Based on the forms submitted, interested Participants will be Shortlisted. The LxS team will get in touch with you to guide you through the registration process and secure your seat. In some cases, you might need to provide work samples or participate in an interview.

### < STEP 5 >

To secure your spot, make the course Tuition Fee Payment using our online payment platform. You will receive a confirmation receipt via email. Please ensure that your tuition fees are paid on time to allow us enough time to process your VISA. Tuition fees shall be made via online portal.

### < STEP 6 >

VISA and Travel Arrangements. A dedicated travel and VISA Help Desk from LxS will be available to support you. Since many of you might be traveling to Europe for the first time, our team will guide you through the entire VISA process and provide optional support for travel bookings as well.



## // 08.01 //

# Course Expenses

The entire travel expense is to be borne by the students, and it is considered self-financed. Course tuition fees does not cover any charges for travel.

### Early Booking for Cost Savings >

To ensure an affordable trip, it is recommended to make your bookings, especially for accommodation and internal travel, as early as possible. Early planning can often lead to cost savings, and it's advisable to secure your arrangements as soon as possible to take advantage of the best rates and availability.

### Budget Estimate >

The total cost of the course will come to **2850 EUROS**.

LxS will provide a complete package that includes all the following elements.

- Course Fees: 750 EUROS
- International Flight: 800 EUROS
- VISA: 100 EUROS
- Accommodation (1 month): 450 EUROS (Shared apartment)
- Internal Travel: 750 EUROS

### Travel Expense Payment >

A Travel Help Desk is provided by LXS to assist students in managing their logistics during their visit. Students should make direct payments to the travel agency or the relevant hotels and flight companies for all their required bookings. Participants are not required to make any travel expense payments to LXS.

*\*Given cost for VISA subject to vary depending of the embassy rules*

## // 08.02 //

# Travel Guidelines

### LxS Travel Help Desk >

LxS provides a dedicated Travel Help Desk service for participants. This service is designed to assist with travel planning and guidance.

### Travel Planning >

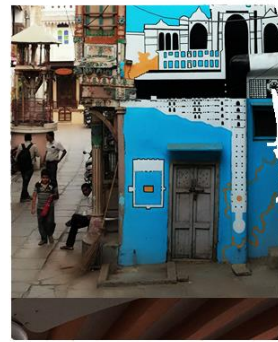
LxS provides travel planning support, including travel guidance, group counseling sessions with step-by-step guidance, and assistance from our Travel Help Desk for bookings. Additionally, participants will receive detailed travel management guidelines to help plan their trip effectively.

### Travel Safety and Emergency Contacts >

LxS's core team will be present at all the cities covered under the course duration. In the event of emergencies, they will provide all necessary support. Moreover, there is a dedicated Indian professor from LXS accompanying the group throughout the trip, ensuring that any concerns or emergencies raised receive prompt support.

### Travel Booking Timing >

All travel bookings should be made after receiving the VISA to avoid any potential refund issues. It is recommended to follow a specific sequence for bookings. Start by booking your flight ticket once your VISA is secured. After confirming your flight, proceed to book your accommodation. Finally, arrange any necessary internal travel bookings. By following this sequence, you can ensure a smooth and well-organized travel experience.



// 09 //

## General Information

< Location >

AHMEDABAD / INDIA

/ + Trip to Rajasthan, Chandigarh, Delhi, Agra /

< Dates >

**AUGUST 2024**

< Scale of intervention >

Urban scale: Neighborhood: Ahmedabad Old City / District: Old City, Khadia  
Local scale / Case of study: GIC Ahmedabad

< Eligibility > Open for students and Young Professionals

Architecture

Urban planning & Urban design

Design, Fine arts

Theatre, Drama & Dance, Filmmaking

Engineering

< Prerequisite is only applicable for Students >

2nd Year onwards (1st year students are not eligible for this course)

Professionals under 30

< Course Language > **English**

< No of seats > **25 Max / Team**

< Registration closing date > **15th April, 2024**

< Course Package Fees > **2850 Euros / 3070 USD**

// 10 //

## Contact + Helpdesk

LxS Foundation (Local to Society)  
Website: [www.lxs-globe.org.in](http://www.lxs-globe.org.in)  
Instagram: @local.x.society

Help Desk: +91 95123 04340 / +34 609509851 / +34 605626336  
(only What'sApp, 11 AM to 8 PM, Monday to Saturday)

Email: [lxs.team.pc@gmail.com](mailto:lxs.team.pc@gmail.com)

